



Township Newsletter Salt Lake County

Volume 9, Issue 1 July 2015
[HTTP://www.whitecityutah.org](http://www.whitecityutah.org)
Web Hosting Donated by XMission



White City Community Council meets on the first Wednesday of each month at 7:00 PM, Eastmont Middle School, 10100 S. 1300 E. Room #105; Sandy, UT Meetings are Open to the Public.

Community Council Members

Kay J Dickerson kjd727@hotmail.com 10442 Carnation Drive Sandy, UT 84094	(801) 571-1447 (801) 557-9423	<u>Dist. 1</u> Chair ACCT Rep.
Paulina Flint pbflint@yahoo.com 10467 Carnation Drive Sandy, UT 84094	(801) 571-5257	<u>At Large A</u> Vice-Chair ACCT Alt. West Side Rep. Newsletter Special Projects
Jeremy Christensen jtchristensen3@gmail.com 9644 S. Poppy Lane Sandy, UT 84094	(801) 661-3483	<u>Dist. 5</u> Treasurer ACCT Alt.
Lenelle Sanchez lenelle76@gmail.com 800 Carnation Drive Sandy, UT 84094	(801) 633-0473	<u>Dist. 2</u>
Cody Cutler CodyKitten@msn.com 920 E. Violet Dr Sandy, Ut 84094801	(801) 495-2313	<u>Dist. 3</u> ACCT Rep.
Linda Price lp2wcc@gmail.com 1223 Sego Lily Dr. Sandy, Ut 84094	(801) 419-3013	<u>Dist. 4</u> ACCT Alt.
Christy Sieger-Webster cmswebster@yahoo.com 9942 S. Electra Ln Sandy, Ut. 84094	(801) 201-2582	<u>Dist. 6</u> Secretary
Richard Snow snowtile@msn.com 9816 Garnet Drive Sandy, UT 84094	(801) 572-0710	<u>At Large B</u>
Darrin Webster darrinwebster1776@gmail.com 1237 Sego Lily Dr Sandy, Ut 84094	(801) 523-9371	<u>At Large C</u> Salt Lake County Historical Preservation Committee
Dave Scharffs	(801) 571-7891	CAB

We are trying to create a digital History of WCTCC Area. If you have pictures on slides or hard copy, Let us know.

**Voting on Metro Township & Municipal Services
via All Mailed Ballots.
Begins October 8th**

Official Voter Information P. 2 - 3

Ballot Information P. 4

Municipal Services Information P. 6 - 7

Currently Your Governance & Services Are As Follows:



Patrick Leary
Township Executive
(385) 468-7060

Mr. Leary has spent his professional career working in local government administering large organizations such as the Office of the District Attorney, the Salt Lake County Clerk's Office. He served for four years as the Associate Director for the Administrative Services Department of Salt Lake County.

In 2011, he was appointed by the Salt Lake County Mayor as the Director of the Public Works Department responsible for seven agencies with almost 400 employees and a combined budget of \$93 million.

This department provides city services to the unincorporated residents in the Salt Lake valley, as well as regional services countywide. In January 2013,

Mayor Ben McAdams appointed Mr. Leary as the Township Executive responsible for providing municipal services to the 160,000 County residents living in the unincorporated areas of the County. This newly minted position serves much like a city manager does in local city governments.

The unincorporated area of Salt Lake County encompasses almost 450 square miles of area, and is considered the 2nd largest municipality in Utah.

Mr. Leary has conducted numerous organizational studies, teaches courses in management and is a skilled facilitator. Mr. Leary is completing a master's degree in Public Administration from the University of Utah, and completed his undergraduate work at Utah State University.

About Township Services

- **As a county resident, how does living in a township or in the unincorporated area differ from living in a city?** Your "city" government is provided by Salt Lake County, represented by the elected [Salt Lake County Mayor](#) and [County Council](#).

Funding for municipal services is different than funding for other county programs and services.

- [Learn more about the structure and budget for Municipal Services](#)
- [Municipal Services Provided to Unincorporated Areas and Townships](#)

Contact us with questions, suggestions or recommendations. Our contact information, as well as a calendar of countywide events, is below. We look forward to seeing you as we're out and about in the townships and throughout the unincorporated area.

Director of Communications.....Stacey Adams 385-468-7130

Official Approved Voter Information Below:



Accepted by ACCT for all Township
Community Council areas 6/11/2015

Metro Township.....What is it?

The Metro Township is a new form of local municipal government created by the Utah Legislature during the 2015 legislative session. It was created to allow current unincorporated townships an option different than the current choices of incorporating as a City or a town. Each Metro Township will have five council members elected to represent the Metro Township. If the voters choose Metro Township and vote to stay in the Municipal Services District, the chairperson of the Metro Township Council will represent the Metro Township on the MSD Board of Trustees. The Metro Township's powers, duties and responsibilities are established by state law. The Metro Township will have the power to enact local ordinances and oversee local planning and municipal services.

City/Town.....What is it?

A City/Town is the base level of local control that has been a part of governance law going back in time for over a few millennia. Its powers, duties and responsibilities are established by state law. It allows the City to have local control of land use, ordinances and the delivery of municipal services.

City/Town vs. Metro Township

There are many similarities between the City/Town and the Metro Township. Both choices offer the newly incorporated community boundary protection and local control. Both will also continue to receive police and fire services from the Unified Police Department (UPD) and Unified Fire Authority (UFA), and sanitation/recycling services from the Wasatch Front Waste and Recycling District (WFWRD).

There are also some differences which include:

1. The Metro Township will not be allowed to assess the utility franchise tax or the municipal telecommunications tax. Under current state law, only cities and towns can assess this tax.
2. If the voters choose to become a City, the City will be part of the Municipal Services District. In January of 2017, the newly-elected City council will have six months to decide if they want to opt out of the Municipal Services District. If they opt out, they could choose to remain independent but contract with the Municipal Services District.

Service Provider Information



Who will provide the service?

Service Being Provided	City / Town	Metro Township
Police	Unified Police Department of Greater Salt Lake County (UPD)	Unified Police Department of Greater Salt Lake County (UPD)
Fire	Unified Fire Authority (UFA)	Unified Fire Authority (UFA)
Garbage / Recycling	Wasatch Front Waste and Recycling District (WFWRD)	Wasatch Front Waste and Recycling District (WFWRD)
Water	Current Local Provider	Current Local Provider
Sewer	Current Local Provider	Current Local Provider
Municipal Services	Municipal Services District New City/Town Council may opt out in 2017	<p>* If approved by the voters to join, service will be provided by the Municipal Services District.</p> <p>** If not approved by the voters to join the Municipal Services District, the service provider will be determined by the Metro Township Council</p>
Salt Lake County currently provides Municipal Services funded by the Municipal Services Fund.		
Based on election results and/or other governance decisions, Municipal Service delivery may be subject to change.		

**Approved by the Salt Lake County Community Preservation Communications Committee on June 5, 2015*

If the voters choose to become a Metro Township & Vote to stay in the Municipal Services District, sales taxes collected in the unincorporated County and Metro Township will go to into the Municipal Services District. Funding for services will be distributed according to the budget adopted by the MSD Board of Trustees.

Tax / Fee Authority

Voting Information for White City Township Nov. 2015. Ballots will be received in the mail approximately October 8, 2015

Tax/Fee Type	City/ Town	Metro Township	Comments
Sales Tax	Yes	Yes	
Special Assessment Areas	Yes	Yes	
General Municipal Regulatory Fees	Yes	Yes	i.e. Business Licensing, Development Impact Fees, Building Inspection Fees, etc.
Property Tax	Yes	Yes*	*-Metro Township Council if not in the Municipal Service District (MSD); or, if residents choose to join the MSD, the MSD Board has property tax authority.
Utility Franchise Tax	Yes	No	^Cities and unincorporated residents pay a right-of-way franchise fee on their cable bill. This fee is allowed by the federal government, by way of the Cable Communication Act of 1984.
Current tax and fee authority belongs to Salt Lake County.			
Based on State Law, Salt Lake County cannot assess the Utility Franchise Tax or Municipal Telecommunications License Tax			

**Approved by the Salt Lake County Community Preservation Communications Committee on June 5, 2015*

Land Use Authority

Land Use Power	City/ Town	Metro Township	Comments
Appoints / Establishes Powers of Land Use Boards, Commissions, Committees	Yes	Yes	Examples would include Planning Commission, Board of Adjustments, and Other Land Use Committees.
Establishes / Adopts / Updates All Land Use General Plans	Yes	Yes	
Final Ruling - Rezone Applications	Yes	Yes	
Adopts / Updates Land Use Zoning Regulations	Yes	Yes	
Adopts / Updates Business Regulations	Yes	Yes	
Adopts / Updates Building Codes	Yes	Yes	
Land Use Authority is currently provided by Salt Lake County.			

**Approved by the Salt Lake County Community Preservation Communications Committee on June 5, 2015*

Permanent Vote by Mail

Your ballot can be mailed to you on an on-going basis by signing up for our Permanent Vote by Mail Program. Any registered voter may apply to permanently receive his/her ballot by mail by clicking here: [Permanent Vote By Mail](#) (Click). Ballots to voters in our Permanent Vote By Mail Program are mailed approximately four weeks prior to each election.

Ballots cannot be forwarded by the U.S. Post Office so be sure to update your address with our office if you move within Salt Lake County.

Single Election By Mail Voting (Or Absentee Voting)

If you would like to receive a by mail (absentee) ballot for a specific election and do not want to sign up for the Permanent Vote by Mail Program, you may download the form by clicking here: [Absentee Ballot Application](#).

Military and Overseas Voters

Military or overseas voters may complete the Federal Postcard Application, which can be accessed by visiting the Federal Voting Assistance Program web site at: www.fvap.gov.

Return of Application

Please complete your form and return it to the Salt Lake County Clerk's office no later than the Thursday before the election.

You may return the form;
via email to votebymail@slco.org
by facsimile to 385-468-7401
by mail or hand delivery to:
County Clerk, Election Division,
2001 South State, S1100, P. O. Box 144575
Salt Lake City, Utah 84114-4575

2015 White City Township Ballot Question

Question 1: Shall White City Planning Township be incorporated as a metro township White City Metro or City of White City?

☐ White City Metro Township

☐ City of White City

Question 2: If the majority of voters voting in this election, vote to incorporate as a metro township, shall the metro township be a metro township with limited municipal power that is included in a municipal services district?

☐ Yes

☐ No

Community Preservation Project

*Current Status of Community Preservation

Information below from county website.

At a time when people want government to be better, not bigger, I've heard from many in the unincorporated county about their desire to preserve what's unique about their communities, have a direct say over how their tax dollars are spent, and also receive high quality, cost-effective services from the county.

— Ben McAdams

The Community Preservation citizen committee hosted a town hall meeting on December 10, 2014.

Why is the Community Preservation Project necessary?

Months of time and thousands of dollars have been expended during the past 30 years over incorporation and annexation issues. This proposal would put an end to that. Salt Lake County's unincorporated residents deserve to know what their communities will look like now and in the future, without the uncertainty that the historic border wars have created.

Adoption of this proposal would lead to expanded economic development that would increase jobs and result in sustainable economic vitality across the Salt Lake valley, while keeping taxes low.

What is the Community Preservation Project?

If passed by voters in the unincorporated county, the Community Preservation Project would provide:

Smaller government: that promotes consolidated, cost-efficient provision of service with less administrative burden.

Predictability and community stability: Borders would be stabilized and certainty would prevail over fears of "land grabs" by neighboring cities and worries about fluctuating revenues and service costs. Stable borders would allow bonding for infrastructure, such as sidewalks and road improvements.

Direct representation: for residents of unincorporated county regarding how their local tax dollars are spent.

A broad tax base: that supports needs throughout the unincorporated county.

A robust economic development effort: to compete for businesses and jobs on behalf of unincorporated communities without fear of annexation.

Provide an opportunity for delivery of efficient, high quality regional services: as seen by UFA and UPD.

Municipal Services District

What is the Municipal Services District?

The Municipal Services District (MSD) manages the funding and service delivery of municipal services for the townships and unincorporated areas of Salt Lake County, as well as

cities within Salt Lake County that contract with the MSD to provide these services.

Municipal services are often managed by cities, such as road maintenance and street lights, storm drains, and snow removal.

How is the Municipal Services District (MSD) managed?

The MSD will be managed by a Board of Trustees.

Before the Township Council chairs are voted into office, the County Council will act as the MSD Board of Trustees.

In January 2017, once the Township Council chairs are sworn into office, the MSD Board of Trustees will consist of each Township Council Chair, two County Council representatives, and the County Mayor as the District Executive.

Each MSD Board of Trustees member will have a weighted vote. That will be tied to the population of the Metro Township they represent.

How will municipal services be paid for?

Funding for municipal services is provided by sales tax revenue from the townships and unincorporated areas of Salt Lake County, as well as sales tax or property tax revenue from cities within Salt Lake County that contract with the MSD to provide these services.

[See a summary of what the bill passage does](#)

The State Legislature voted "yes" on the [Community Preservation bill - SB 199](#) - during the 2015 legislative session. The citizen committee together with mayor's office staff issued [weekly legislative updates](#) while the bill was being reviewed by state legislators. [Deputy Mayor Nichole Dunn testified before a Utah State Senate committee, telling them why Salt Lake County supports SB 199.](#)

The Community Preservation bill will create a "Metro Townships" form of local government that will be similar to cities, but with better regional coordination and economies of scale. While townships have existed for 20 years, their role has been limited to planning and zoning – under the new law they will become "Metro Townships," in which they will have a bigger role and be led by elected township officials.

[Senate Bill 199, Community Preservation bill](#)

[Community Preservation bill summary, December 2014](#)

[2015 Community Preservation bill overview](#)

[Structure of Salt Lake County government: before and after Community Preservation](#)

[1st substitute description by Sen. Karen Mayne](#)

Metro Townships

Differ from traditional cities in two ways:

They will not impose property or utility franchise taxes. Their government services, such as police and fire protection, public works, and administrative staff will be furnished by regional entities (UFA, UPD, Municipal Services District, Office of Township Services).

Governing:

Each Metro Township will have an elected Township Council, much like a traditional city council.

The number of members on the Township Council will be 3-5, depending on population. The Township Councils will have the power to enact local ordinances and oversee local municipal services.

Municipal Services Provider:

Municipal services are often managed by cities, such as road maintenance and street lights, storm drains, and snow removal. The Municipal Services District will manage these services

Services Provider:

Municipal services are often managed by cities, such as road maintenance and street lights, storm drains, and snow removal. The Municipal Services District will manage these services.

Paying for Our Municipal Services

General Fund vs. Municipal Services Fund

Salt Lake County manages two separate budgets: the General Fund and the Municipal Services Fund.

The General Fund is the budget that goes towards all of Salt Lake County. For instance, our division of [Flood Control](#), [Parks and Recreation](#), [Aging Services](#), etc. are paid for from the General Fund because these services are used countywide; that includes within city boundaries and in the unincorporated areas.

The Municipal Services Fund is the budget that applies solely to the unincorporated areas of Salt Lake County. That means that because the county is the primary local government for the unincorporated areas, the county provides city-type services such as snow plowing, road maintenance, addressing, etc. to our unincorporated communities. (Some cities within Salt Lake County contract with (hire) the county for some of these services.)

Salt Lake County Animal Services is dedicated to providing superior support, education, protection and advocacy for all animals and members of the community.

[Landfill](#).....The Salt Lake Valley Landfill provides environmental stewardship, financial integrity, safety, recycling education, and quality service to benefit the environment, residents, business, and employees of Salt Lake County.

[Operations](#).....Salt Lake County Operations provides high quality maintenance services to promote the safety and welfare of the County residents. Services include: Pavement management, snow & ice control, street lighting, signs & striping, traffic signals, weed control, bee inspections.

[Engineering & Flood Control](#).....Salt Lake County

Engineering and Flood Control provides planning, engineering design service, construction management and inspection services for transportation, roadway and municipal drainage construction in the unincorporated area of Salt Lake County. The Municipal Services Fund receives its funding entirely from sales tax revenue in unincorporated Salt Lake County.

Your Current Services

Municipal Services Fund

County Council

Office of Township Services

County Mayor

Public Works Services

Municipal Public Works (Contracted with SLCO PW Operation Services)

- Road Maintenance
- Storm Drain Maintenance
- Sidewalks
- Streetlights
- Traffic Signals
- Snow Removal

Animal Services

(Contracted with SLCO Animal Services)

- Shelter Operations
- Medical Clinic Operations
- Customer Care Program (Animal Care)
- Special Programs Management
- Outreach
- Rescue/Foster Program
- Volunteer Management
- Education Program
- Animal Behavior Program
- Field Operations
- Animal Welfare & Enforcement

Municipal Park Services

- Park Management Services

Justice Court Services

- Court Management

Community Liaison Services

- Community Council Support

Municipal Engineering Services *

- Storm Drain Inventory, Planning and Design
 - Storm Water (UPDES) Compliance
 - Hydrologic Plan Reviews
 - Impact Fee Management
- Sidewalk Inventory and Master Planning
- Transportation Planning and Engineering Permits
- Pavement Inventory, Planning & MGT
- Road Striping Management
- Road Safety Audits
- Traffic Calming Program
- Signal Warrant Management
- Signage Management
- School Safety Zone Management
- Active Transportation

Planning & Development Services

- Zoning
 - Planning Services
 - General Plans
 - Strategic Master Plans
 - Development Permitting
- Building Code Inspection and Permitting Services
 - Zoning Code Enforcement Services
- Business License Services
- Storm Water Services
 - Permitting Services
 - Inspection Services
 - Geographic Information Services

Community & Economic Development Services

- Municipal Economic Development

Flood Control Engineering Services *

- Emergency Flood Control Management
 - Capital Project Design & Construction
 - Flood Control Maintenance
 - Planning & Coordination with Municipalities
 - Planning & Coordination with Water/Canal Companies
- Canal Companies Contract Management
- Water Quality Stewardship Program (WAQSP)
 - Water Quality Sampling & Analysis
 - Watershed Restoration Management
 - Water Quality Studies (TDML)
- Storm Water Coalition Management (UPDES)
- FEMA Floodplain Mapping

Addressing Services (Countywide)

- Provides accurate Address Management
- Provides addressing coordination Countywide
- Street intersection coordinate assignment
- Street Name Approval
- Geographic Information System

Solid Waste Management Services (Landfill)

- Regional Landfill Management
 - Operations
 - Engineering
 - Permit Compliance
- Regional Transfer Station Management
 - Operations
 - Permit Compliance

Public Works Operation Services

- Road Maintenance
 - Chip/Slurry Seal
 - Sweeping Services
 - Vector Truck Services (Storm Drain)
 - Road Cut Inspection Services
 - General Road Maintenance Services
- Traffic Signal Design, Construction, Maintenance Services
 - General Maintenance Services
 - Concrete Services
 - Sidewalk Repair & Maintenance Services
 - Street Lighting Installation & Maintenance Services
- Snow Removal Services
 - Street Snow Plowing Services
 - Sidewalk Snow Removal Services

Public Works Operation Services (Countywide)

- Beehive Inspection Services
- Noxious Weed Control Services

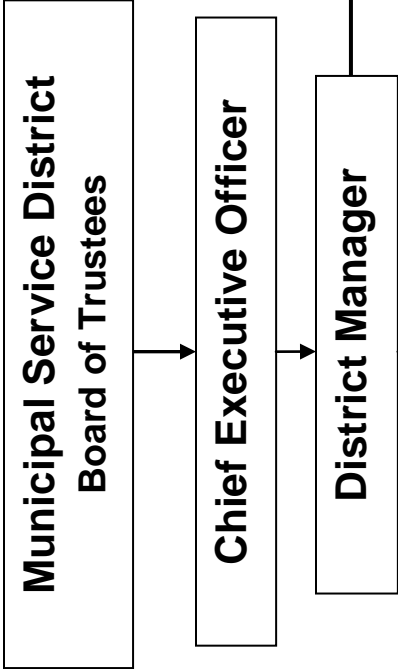
Animal Services

- Shelter Operations
- Medical Clinic Operations
- Customer Care Program (Animal Care)
- Special Programs Management
- Outreach
- Rescue/Foster Program
- Volunteer Management
 - Education Program
 - Animal Behavior Program
- Field Operations
 - Animal Welfare & Enforcement

* - Some Municipal Engineering Services are contracted from Flood Control

This MSD Chart is a conceptual depiction of how the Municipal Fund's Services could transition to the MSD. This shows all services you have today.

The future board of trustees consisting of chairs of Township Councils, City Mayors & County Council Members.



- Township Administration**
- Township Manager
 - Community Liaison Services
 - Clerical
 - Legal
 - Justice Courts
 - Fiscal

Assistant District Manager / Government Affairs Officer

Public Works

Business & Land Use Development

Park Services

Animal Services

- Road & Street Construction & Maintenance**
- Road Maintenance
 - Storm Drains
 - Sidewalks
 - Streetlights
 - Traffic Signals
 - Snow Removal
- Public Works Engineering Services**
- Storm Drain Inventory, Planning and Design
 - Storm Water (UPDES) Compliance
 - Hydrologic Plan Reviews
 - Impact Fee Management
 - Sidewalk Inventory and Master Planning
 - Transportation Planning and Engineering
 - Permits
 - Pavement Inventory, Planning & MGT
 - Road Striping Management
 - Road Safety Audits Management
 - Traffic Calming Program
 - Signal Warrant Management
 - Signage Management
 - School Safety Zone Management
 - Active Transportation

- Zoning Support**
- Planning Services
 - General Plans
 - Strategic Master Plans
 - Development Permitting
 - Zoning Code Enforcement Services
- Building Code Inspection and Permitting**
- Permitting Services
 - Inspection Services
 - Geographic Information Services
- Community & Economic Development Services**

- Park Management Services**
- Neighborhood Parks Only

- Shelter Operations**
- Medical Clinic Operations**
- Customer Care Program (Animal Care)**
- Special Programs Management Outreach**
- Rescue/Foster Program**
- Volunteer Management**
- Education Program
 - Animal Behavior Program
- Field Operations**
- Animal Welfare & Enforcement

Services are not reduced. Under the conceptual model they all exist under 4 categories. Under district law services may be grouped such as roads, storm drains and snow removal etc. This chart has not been approved and is a conceptual drawing only. The intent is to transition your county services to the MSD.

Municipal Services Provided to Unincorporated Areas and Townships

Municipal Engineering Services

- Storm Drainage Maintenance
- Inventory and master planning
- Design and construction management
- [Storm Water \(UPDES\) compliance](#)
- Hydrologic plan reviews for development
- Impact fee management

Sidewalk Construction

- Maintenance and repair
- Inventory and master planning
- Design and construction management

Transportation Planning and Engineering

- Permits
- Road cut permit management
- Special event permit management
- Pavement inventory master planning and management
- Street lighting master planning and management
- Road striping management
- Road safety audits management
- [Traffic calming program](#)
- Long-range planning
- Signal warrant management
- Signage management (Stop signs, Yield signs, etc.)
- School safety zone management
- [Active transportation \(Complete Streets\)](#)

Planning and Development Services

- [Zoning](#)
- [Planning services](#)
- General Plans
- Strategic (master) plans
- Development permitting
- [Building code inspection and permitting](#)
- [Zoning code enforcement services](#)
- [Business license services](#)
- Storm water services
- Permitting services
- Inspection services
- Geographic information services (GIS)

Community and Economic Development Services

- Municipal Economic Development

Justice Court Services

- Court management

Municipal Park Services

- Governance Board

Community Liaison Services

(Townships/Community Councils)

- Community council support

Animal Services

- Shelter
- Adoptions
- Licensing
- Community education
- Park management services

Sanitation Services

(Wasatch Front Waste & Recycling)

View newsletter in digital form and click on any link to see additional information. Touch control on key board at the same left click your mouse. Links will open to reveal additional data.

funded entirely through property tax revenue from unincorporated Salt Lake County.

- UFA and UPD have separate governing boards that oversee their budgets. They are the Salt Lake Valley Fire Service Area and the Salt Lake Valley Law Enforcement Service Area (SLVESA).
- The property tax rate for the Salt Lake Valley Fire Service Area is .002079.
- The property tax rate for the Salt Lake Valley Law Enforcement Service Area is .001999.
- *The Police Fee is no longer in effect. Read more about the [police fee](#).

Franchise Taxes

Residents in unincorporated Salt Lake County

do not pay utility or gas franchise taxes.

A franchise tax or municipal energy tax is a tax imposed by many cities to pay for fire and police services, or other municipal services. This tax is often tacked onto electric or gas utility bills. Cities may also impose a telecommunications tax on phone bills.

City residents and unincorporated county residents pay a right-of-way franchise fee on their cable bill. This fee is allowed by the federal government, by way of the Cable Communication Act of 1984.

White Tower Swimming Pool



Since 1961

Located at: 998 E Larkspur Drive; White City, Ut 84094

\$4 daily admission

Summer Passes Available

~ Book our facilities for your next summer party ~

Open Swim Hours:

Monday—Thursday 12:00 PM to 8:00 PM

Monday/FAMILIES only 8:00 PM to 10:00 PM

Tuesday/TEENS only 8:00 PM to 10:00 PM

Friday—Saturday 12:00 PM to 6:00 PM

Sunday...Available upon request

Open Memorial Day--Labor Day

COME SWIM WITH US!

White Towers Swimming Pool; (801) 572-3865

Fire and Police Services

For unincorporated residents, fire and police services are provided by the [Unified Fire Authority](#) (UFA) and the [Unified Police Department](#) (UPD), respectively. These fire and police services are



White City Township View from Columbine Circle 1950's



Little Cottonwood Canyon in the background.

Public Works - Code Enforcement

The Code Enforcement Division is responsible for protecting the public's health, safety, and general welfare through the limitation of violations of the Salt Lake County Zoning Code, [Title 19](#). Major tasks include ending zoning code violations, enforcing business licenses, maintaining the code enforcement database, and monitoring illegal duplexes and properties that violate the [Single Family Dwelling Code](#) (more than one family living in a single family residential zone). This division issues civil notices and orders, as well as criminal citations. We work closely with the [Salt Lake County Attorney's Office](#) to make sure violations are brought into compliance.

Salt Lake County's primary responsibility is to insure all properties are safe for the well being of citizens.

Issues of concern include:

- Vacant buildings
 - Trash
 - Clear view violations
 - Sheds and houses
 - Unsafe and illegal home modifications (conversions)
- The county finds it necessary to safeguard our appearance through property maintenance by addressing violations

such as:

- Non-operational cars on private and public property
- Trash
- Abandoned appliances
- Areas of overgrown vegetation

19.04.200 - Dwelling, single-family.

"Single-family dwelling" means a building arranged or designed to be occupied by one family, the structure having only one dwelling unit.

(Prior code § 22-1-6(22))

19.04.230 - Family.

"Family" means:

- A. Any number of people living together in a dwelling unit and related by blood, marriage or adoption, and including up to three additional unrelated people; or
- B. One to four unrelated people living together in a dwelling.

Each unrelated person owning or operating a motor vehicle shall have a lawfully located off-street parking space.

(Ord. No. 1753, § II, 8-6-2013; Ord. 1347 § 2, 1996; (part) of Ord. passed 3-18-1981; prior code § 22-1-6(29))

Rebuild of Alta View Elementary Starting Soon

Steve Wrigley – Canyons School Board of Education

The coming year will be cause for celebration in White City. Construction to rebuild Alta View Elementary will begin in spring 2016 — an effort that will provide for the needs of a 21st Century education and help ensure students are prepared for college and careers.

The Canyons Board of Education unanimously voted to rebuild Alta View Elementary in October 2014. The vote solidified the Board's 2010 promise to the public to rebuild a school in the White City area as part of the \$250 million voter-approved bond. The Board voted to rebuild Alta View largely because of its advanced age and condition. The decision was supported by the White City Township Council, and followed months of public input from Township Council, parents, and the principal and School Community Council. The rebuilt school is scheduled to open to students in fall 2017.

The Alta View School Community Council and PTA have expressed great excitement about the Board's vote to rebuild the school. Meetings with community members and employees have been held to receive input on the new school as part of the planning process. This summer, Naylor Wentworth architects will utilize the input to sketch preliminary plans for the school. Preliminary plans will be presented in community meetings before they are brought to the Canyons Board of Education for final approval. While designs are in process, it is the desire of the Board that the school be rebuilt on the current school's campus, and that students remain in the current building during construction.

As is tradition in Canyons School District, the spring 2016 start of construction at Alta View will be celebrated in a community ground-breaking ceremony. Information will be posted as the date approaches at www.canyonsdistrict.org. In the meantime, White City community members in the coming weeks are likely to see a few changes to improve traffic flow on the school's campus in preparation for construction. Crews are expected to widen the school's current entryway to include a parent and bus drop-off point and designated turn lanes in time for school to start this fall. The school community-suggested upgrades are planned to improve traffic flow and safety on the campus during high-traffic times. Additionally, a fence will be placed around the grassy area at the front of the school to allow the area to be used as a student play area during the coming school year and throughout the construction period.

The Alta View reconstruction will be financed with proceeds from the \$250 million voter-approved bond. The Canyons Board of Education has maintained neutral tax rates as promised to the public during the

bond election. The District's AAA Bond Rating has enabled the district to secure low interest rates to save taxpayers money.



1962 Aerial Photo of White City Township
Historical Glad House lower right. ☆
Altaview Elementary property on mid to upper
left along Carnation Dr. ☆

Be Ready Utah

Be Ready Family focuses on preparing individuals and families for potential emergencies and disasters. This preparation includes the most essential elements including a plan and a three - five day disaster supply kit for your home and vehicle.

Be Ready Family also provides you with information about the natural hazards we have in Utah so you can be informed about the potential risks and dangers involved with each one. If you or your family would like to get involved in furthering your preparedness efforts and help those around you,

Be Ready Family has information on how you can volunteer and share your desire to help others be ready. Emergencies and disasters can strike at unexpected moments and it's important to take the time now to do some simple things that will help you get back on your feet as quickly as possible following any emergency.

Whether an emergency or disaster keeps you at home or requires you to evacuate, you'll be better prepared to deal with the situation, and to help others, if you have adequate emergency supplies on hand. Water, food, and articles needed to maintain your body temperature and provide protection against the elements are the most important items to include. Also, certain individuals require prescription medications to sustain their lives.

Consider creating two types of kits: one that has everything you will need if you are required to stay in your home and a smaller, lightweight version to take with you if you have to evacuate. Both kits should include enough supplies to take care of your needs for at least three days.

Workers and students should consider keeping a small kit at their place of work or school. For those who spend a lot of time in the car, keep a kit in the trunk.

When preparing for a possible emergency situation, it's best to think first about the basics of survival: fresh water, food, clean air and warmth.

Recommended Items to Include in a Basic Emergency Supply Kit:

- [Water](#), one gallon of water per person per day for at least three days, for drinking and sanitation
- [Food](#), at least a three-day supply of non-perishable food
- Battery-powered or hand crank radio and a NOAA Weather Radio with tone alert and extra batteries for both
- Flashlight and extra batteries
- [First aid kit](#)
- Whistle to signal for help
- Dust mask, to help filter contaminated air and plastic sheeting and duct tape to shelter-in-place
- Moist towelettes, garbage bags and plastic ties for personal sanitation
- Wrench or pliers to turn off utilities
- Can opener for food (if kit contains canned food)
- Local maps

Additional Items to Consider Adding to an Emergency Supply Kit:

- Prescription medications and glasses
- Infant formula and diapers
- Pet food and extra water for your pet
- Important family documents such as copies of insurance policies, identification and bank account records in a waterproof, portable container
- Cash or traveler's checks and change
- Emergency reference material such as a first aid book or information from www.ready.gov
- Sleeping bag or warm blanket for each person. Consider additional bedding if you live in a cold-weather climate.
- Complete change of clothing including a long sleeved shirt, long pants and sturdy shoes. Consider additional clothing if you live in a cold-weather climate.
- Household chlorine bleach and medicine dropper - When diluted nine parts water to one part bleach, bleach can be used as a disinfectant. Or in an emergency, you can use it to treat water by using 16 drops of regular household liquid bleach per gallon of water. Do not use scented, color safe or bleaches with added cleaners.
- Fire Extinguisher
- Matches in a waterproof container
- Feminine supplies and personal hygiene items
- Mess kits, paper cups, plates and plastic utensils, paper towels
- Paper and pencil
- Books, games, puzzles or other activities for children

Be Ready Family Downloads (Click on Links below for all the additional info)

- [Guide to Personal & Family Preparedness](#)
- [Family Communication Plan](#)
- [72 Hr. Kit Checklist](#)
- [Car Survival and Emergency Kit](#)
- [Floods: What You Should Know When Living in Utah \(PDF\)](#)
- [Kids Activity Book](#)
- [Disaster Preparedness for Seniors](#)
- [Preparing for Pandemic](#)
- [A 12-Point Program for Individual, Family and Community Preparedness](#)
- [FEMA's In-Depth Guide to Citizen Preparedness](#)
- [Safe Home Tips](#)

Emergency Volunteer Coordinator Janice Kerby

jkerby1984@gmail.com 801-571-0671

Co-Coordinator Kelly Collinson


kmcollinson@gmail.com - 801-502-4499

Donations welcome via Utah Neighborhoods
a 501C3 Tax Exempt Organization.



Visit the Garden

Plan your visit to the Conservation Garden
Park here.

Admission is FREE! 

Garden Resources:

[Garden Tours](#) | [Garden Rules](#) | [Garden Map](#) | [Driving Directions](#)

Hours of Operation

Spring Hours

April

Monday - Saturday: 8am to 6:30pm

Summer Hours

May to August

Monday - Saturday: 8am to 8pm

Fall Hours

September to October

Monday - Saturday: 8am to 6:30pm

Winter Hours

November to March

Monday - Friday: 8am to 5pm

What to See

[Garden Exhibit Paths](#)

This is where you start to learn how to achieve a waterwise landscape. These step-by-step exhibits are broken up into 4 learning paths that emphasize design, irrigation, planting and maintenance.

[Example Landscapes](#)

Curious what a beautiful waterwise landscape looks like? Our example landscapes show you, plus compare their water use to the typical Utah landscape. You'll be amazed at the water you can save.

[Education Center](#)

The Education Center is Utah's premier destination for all things water wise. At this LEED designed building you can take classes, learn

about sustainable building practices, and much more.

Garden Resources:

- [Garden Tours](#)
- [Garden Rules](#)
- [Garden Map](#)
- [Driving Directions](#)

What to See:

- [Garden Exhibit Paths](#)
- [Example Landscapes](#)
- [Education Center](#)



Wasatch Front Waste & Recycling District Update 2015

YTD Diversion

In January-May 2014, the Southeast islands threw away 2,911 tons of garbage, recycled 537 tons of material, and achieved an 18% diversion rating. In comparison, from January-May 2015, 3,478 tons of garbage was generated, 431 tons recycled, and a 15% diversion rating was achieved.

Green Waste Subscription Program

Curbside green waste is in full swing! There are currently over 2,600 subscribers for this program with 128 subscribers in the South East islands. When residents sign up for the green can, they receive a 96 gallon green can with ventilation holes for their use. Services runs from mid-March to mid-December and is weekly (on the same day as their waste and recycling). Certain materials like grease, meats and manure cannot go into the green can, so we ask everyone to read our green waste guidelines found on our website wasatchfrontwaste.org.

Glass Curbside Program

WFWRD is excited to announce that we will be implementing a curbside glass collection program to begin August 3rd in Canyon Rim and Emigration Canyon. Residents in those areas will be able to sign up for the program beginning July 6th. Starting in early 2016, the service will extend to other areas and be available to all residents in the next three years.

Leaf Program

Every year on October 1st, residents can pick up bags at no extra charge at area libraries, recreation facilities, and senior centers. We will take full leaf bags (no garbage or other yard trimmings) at Salt Lake County parks for processing between October 15th and November 30th. Diverting the leaf litter significantly helps to cut costs rather than land filling. Residents are strongly encouraged to mulch and compost their own leaves, as gardens and lawns will directly benefit from the recycled nutrients.

Christmas Tree Collection

From January 5th to 30th of each year, Christmas trees are collected curbside at no extra cost. Trees must be bare of tinsel, flocking, ornaments, stands, and lights. Residents' trees will be picked up on regularly scheduled collection days. Like the leaf bag program, the diverted trees get mulched and significantly save on landfill tipping fees. Also, similar to the leaf bags, do not put trees in recycling cans.

604 West 6960 South, Midvale Utah 84047 • wasatchfrontwaste.org

Office: 385-468-6325 • F ax: 385-468-6330 •

info@wasatchfrontwaste.org



White City Township
Community Council
C/O Utah Neighborhoods
2001 So. State Street; Suite S 3-050
Salt Lake City, Utah 84190

NONPROFIT
U.S. POSTAGE PAID
SALT LAKE CITY, UT
PERMIT NO. 5241

SOUTH EAST COUNTY TOWNSHIP DAYS

AUGUST 22, 2015 @ BIG BEAR PARK

9708 S Poppy Lane ~ 2:00 PM to Dark

VORTEX FIREWORKS SHOW

TO FINISH THE DAY

LIVE BANDS

Looking for venders, crafters!

To Apply go to www.whitecityutah.org

FUN SERVICES BLOW UPS KIDS PLAY FREE!

Home Depot Kids Club!

Sponsored by both Sandy Stores

Need Volunteers to help with the event!

7th Annual Last Blast of Summer!

**94.1
KODJ
Radio Station**

Car & Motorcycle Show

4 to 8 PM

**At Big
Bear Park**

9708 S Poppy Lane



August 22

Car & Motorcycle Show 4:00 – 8:00 PM

Awards at 8:00 PM. Come and enjoy the music
and the cool of the green rolling hills of the park.

Trophies for top vehicle & motorcycle in 12 different classes.

Award for Best in Show, Best Original, Best Truck, Best Street Rod, Best Muscle Car, Best Unfinished, Best Engineered,
Best Special Interest, Best Tuner, Peoples Choice, & Best Stock Motorcycle.

